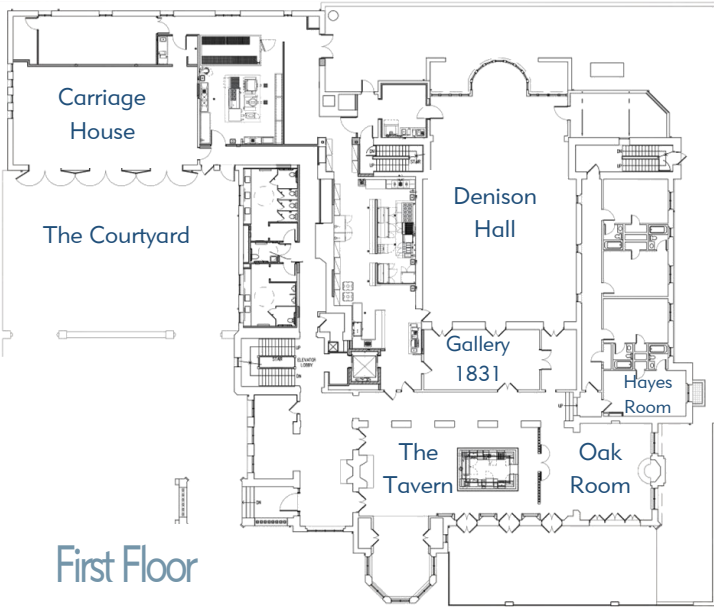




GRANVILLE INN

Est. 1924



Room Capacity

	<i>Rounds of 8</i>	<i>Classroom</i>	<i>Theater</i>	<i>U-Shape</i>	<i>Conference</i>	<i>Dimensions</i>	<i>Square Feet</i>
<i>Denison Hall</i>	130	100	240	60	72	39' x 57'	2,223
<i>Gallery 1831</i>	24	N/A	N/A	N/A	24	29' x 15'	435
<i>Carriage House</i>	64	45	80	26	35	45' x 25'	1,175
<i>The Courtyard</i>	48	N/A	100	N/A	N/A	42' x 30'	1,260
<i>Hayes Room</i>	N/A	N/A	N/A	N/A	10	12' x 21'	252
<i>Wales</i>	48	30	85	22	25	21' x 41'	861
<i>Tudor Room</i>	32	15	30	12	15	21' x 23'	483
<i>Library</i>	N/A	N/A	N/A	N/A	12	13' x 23'	299